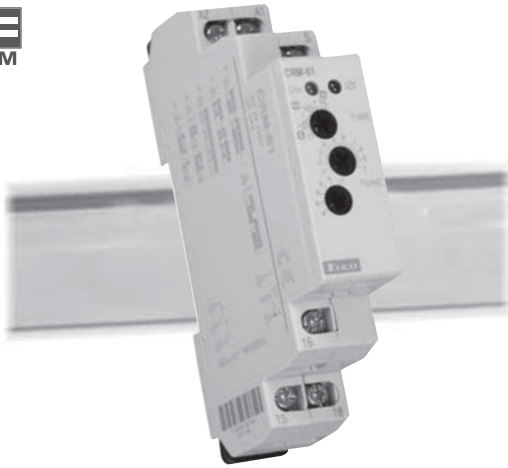


1M

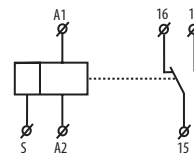


- ! multifunction time relay (6 functions and 6 time ranges), cost effective version of CRM-91H
- ! to be used for electrical appliances, control of lights, heating, motors, pumps, fans, etc
- ! 6 functions: - 3 time functions controlled by supply voltage
- 3 time functions controlled by control input
- ! comfortable and well-arranged function and time-range setting by rotary switches
- ! time scale 0.1 s - 10 hrs divided into 6 range:
(0.1 s - 1 s / 1 s - 10 s / 0.1 min - 1 min / 1 min - 10 min / 0.1 hrs - 1 hrs / 1 hrs - 10 hrs)
- ! universal supply voltage: AC 24-240 V, DC 24 V
- ! output contact: 1x changeover 8 A
- ! output indication: multifunction red LED, which flashes or shines in dependence on output status
- ! 1-MODULE, DIN rail mounting

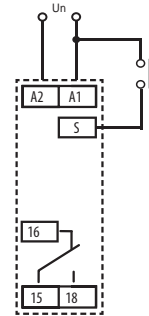
TIME RELAYS

Technical parameters	CRM-61
Number of functions:	6
Supply terminals:	A1 - A2
Supply voltage :	AC 24 - 240 V (AC 50 - 60 Hz) a DC 24 V
Consumption:	AC 0.7 - 3 VA / DC 0.5 - 1.7 W
Supply voltage tolerance:	15 %; +10 %
Supply indication:	green LED
Time ranges:	0.1 s - 10 h
Time setting:	rotaty switch
Time deviation:	5 % - mechanical setting
Repeat accuracy:	0.2 % - set value stability
Temperature coefficient:	0.01 % / °C, at = 20 °C
Output	
Number of contacts:	1x changeover (AgNi)
Rated current:	8 A / AC1
Breaking capacity:	2500 VA / AC1, 240 W / DC
Output indication:	multifunction red LED 8 A / AC1
Mechanical life:	1x10 ⁷
Electrical life (AC1):	1x10 ⁵
Controlling	
Control. voltage:	UNI
Control power input:	AC 0.025 - 0.2 VA / DC 0.1 - 0.7 W
Load between S-A2:	Yes
Glow-tubes:	No
Control. terminals:	A1-S
Impulse length:	min. 25 ms / max. unlimited
Reset time:	max. 120 ms
Other information	
Operating temperature:	-20.. +55 °C
Storage temperature:	-30.. +70 °C
Electrical strength:	4 kV (supply-output)
Operating position:	any
Mounting/DIN rail:	DIN rail EN 60715
Protection degree:	IP 40 from front panel
Overvoltage cathegory:	III.
Pollution degree:	2
Max. cable size (mm ²):	max. 2x 2.5, max. 1x4 with sleeve max. 1x2.5, 2x1.5 mm ²
Dimensions:	90 x 17.6 x 64 mm, see page 157-159
Weight:	69 g
Standarts:	EN 61812-1, EN 61010-1

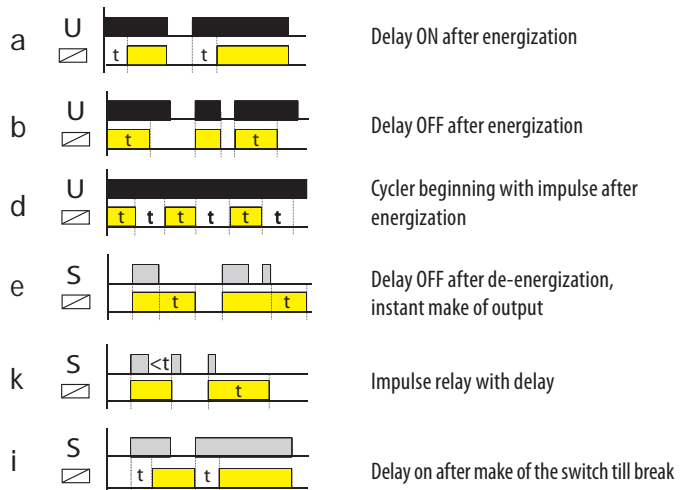
Symbol



Connection



Function



Description

